

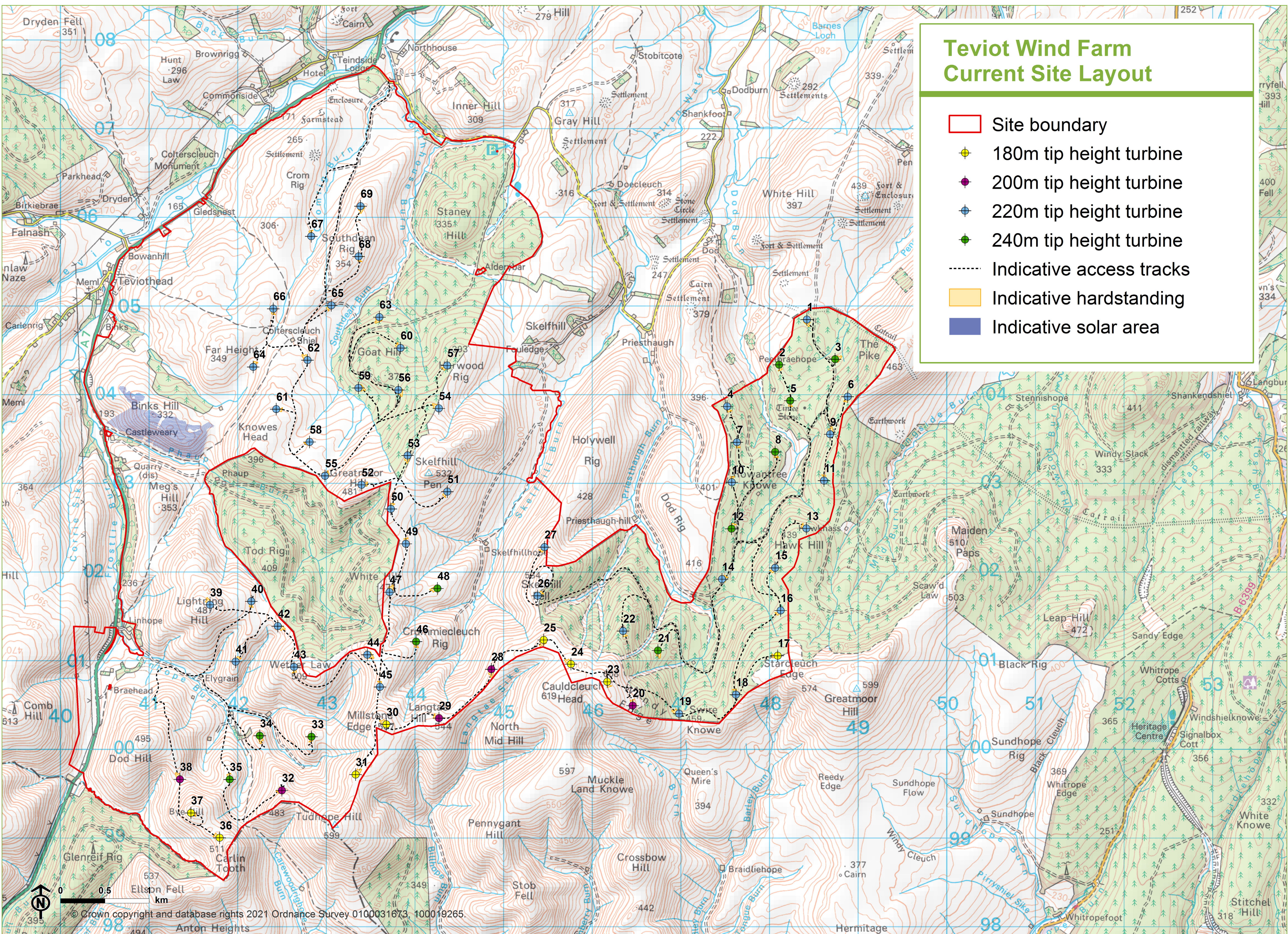
# Teviot Wind Farm

## Proposals

### Current Site Layout

**Figure 2** shows the current Teviot Wind Farm layout and intended location of the solar proposal.

**Figure 2: Current Site Layout**



### Project Proposals

We will be applying to the Scottish Ministers for consent to construct and operate the wind farm under Section 36 of the Electricity Act 1989. The proposed project currently comprises:

- 69 turbines with a number of tip heights ranging from 180m to 240m (indicative capacity of 520MW);
  - Ground mounted solar-photovoltaic panels around Binks Hill in the western part of the site (estimated capacity of 50MW);
  - Turbine foundations, crane hardstanding and transformers;
  - Formation of a new permanent access junction with the A7;
  - An electrical substation and control building;
  - Power cables linking the turbines, laid underground in trenches along access tracks;
  - Additional/new upgraded permanent stone tracks providing access throughout the site;
  - Forestry felling to accommodate proposed infrastructure and a long-term forest management plan;
  - Borrow pits for the sourcing of stone for tracks and crane hardstandings;
  - Steel tower anemometer masts for wind turbine performance monitoring;
  - Temporary site construction compounds and associated infrastructure;
  - Associated ancillary engineering works; and
  - A Landscape, Access and Ecological Enhancement Plan.
- All proposals would allow for continued agricultural grazing use.

To facilitate the operation of the wind farm, a grid connection will be required. A separate consent for the grid connection will be sought by SP Energy Networks (SPEN) under Section 37 of the Electricity Act 1989.

